

PART OF THE NE.1/4, OF SECTION 17, T.6N., R.2E., S.L.B. & M.
FIELD OF DREAMS SOUTH FORK SUBDIVISION PLAT 3

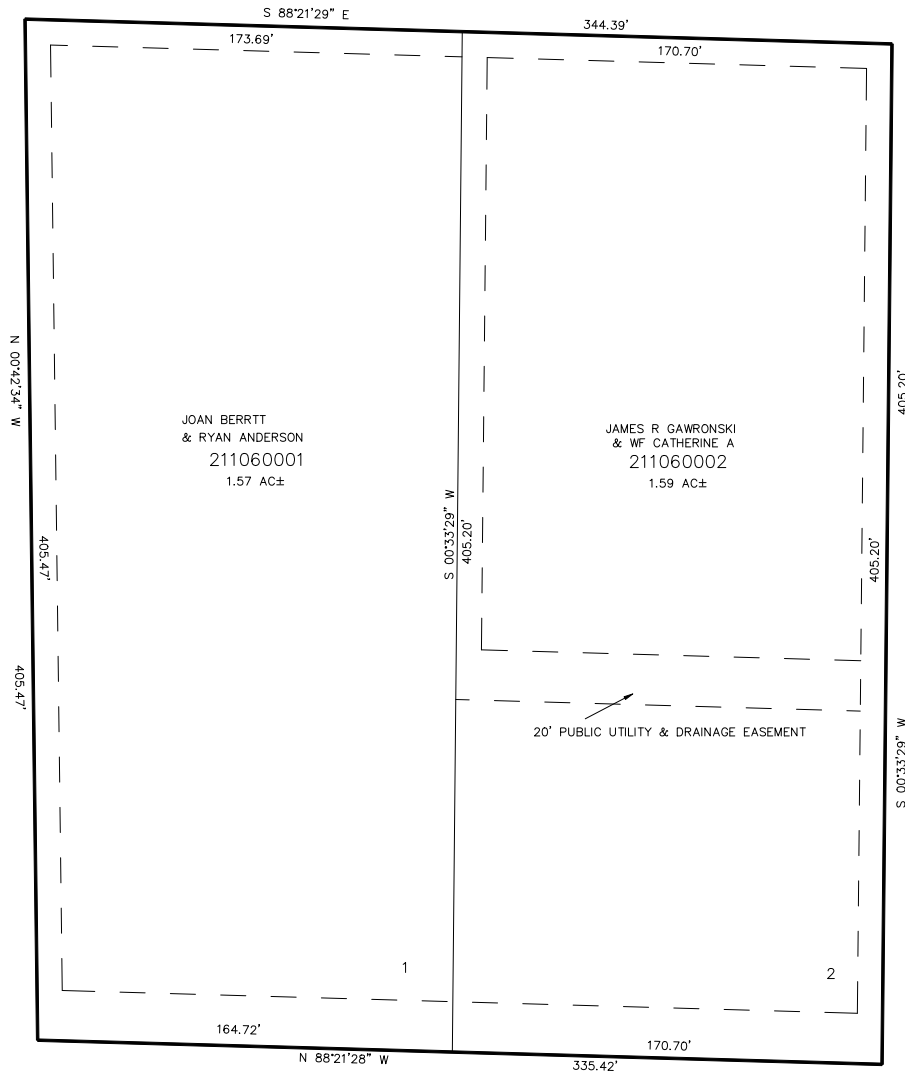
IN WEBER COUNTY

TAXING UNIT: 58

SCALE 1" = 40'

SEE PAGE 26

100 SOUTH STREET (STATE HIGHWAY)



SEE PAGE 26

SEE PAGE 68

SEE PAGE 67

10' UTILITY & DRAINAGE EASEMENTS EACH
SIDE OF PROPERTY LINES AS INDICATED
BY DASHED LINES EXCEPT AS OTHERWISE
SHOWN.

FOR COMPLETE ENG DATA SEE
ORIGINAL DEDICATION PLAT IN
BOOK 62, PAGE 39 OF RECORDS.

FOR TAX PURPOSES ONLY